

A Single Mechanosensitive Channel Protects *Francisella tularensis* subsp. *holarctica* from Hypoosmotic Shock and Promotes Survival in the Aquatic Environment

David R. Williamson,^a Kalyan K. Dewan,^{a*} Tanmay Patel,^a Catherine M. Wastella,^b Gang Ning,^b  Girish S. Kirimanjeswara^a

^aDepartment of Veterinary and Biomedical Sciences, Pennsylvania State University, University Park, Pennsylvania, USA

^bMicroscopy Facility, The Huck Institutes of the Life Sciences, Department of Biology, Pennsylvania State University, University Park, Pennsylvania, USA

ABSTRACT *Francisella tularensis* subsp. *holarctica* is found in North America and much of Europe and causes the disease tularemia in humans and animals. An aquatic cycle has been described for this subspecies, which has caused waterborne outbreaks of tularemia in at least 10 countries. In this study, we sought to identify the mechanosensitive channel(s) required for the bacterium to survive the transition from mammalian hosts to freshwater, which is likely essential for the transmission of the bacterium between susceptible hosts. A single 165-amino-acid MscS-type mechanosensitive channel (*FtMscS*) was found to protect *F. tularensis* subsp. *holarctica* from hypoosmotic shock, despite lacking much of the cytoplasmic vestibule domain found in well-characterized MscS proteins from other organisms. The deletion of this channel did not affect virulence within the mammalian host; however, *FtMscS* was required to survive the transition from the host niche to freshwater. The deletion of *FtMscS* did not alter the sensitivity of *F. tularensis* subsp. *holarctica* to detergents, H₂O₂, or antibiotics, suggesting that the role of *FtMscS* is specific to protection from hypoosmotic shock. The deletion of *FtMscS* also led to a reduced average cell size without altering gross cell morphology. The mechanosensitive channel identified and characterized in this study likely contributes to the transmission of tularemia between hosts by allowing the bacterium to survive the transition from mammalian hosts to freshwater.

IMPORTANCE The contamination of freshwater by *Francisella tularensis* subsp. *holarctica* has resulted in a number of outbreaks of tularemia. Invariably, the contamination originates from the carcasses or excreta of infected animals and thus involves an abrupt osmotic downshock as the bacteria enter freshwater. How *F. tularensis* survives this drastic change in osmolarity has not been clear, but here we report that a single mechanosensitive channel protects the bacterium from osmotic downshock. This channel is functional despite lacking much of the cytoplasmic vestibule domain that is present in better-studied organisms such as *Escherichia coli*; this report builds on previous studies that have suggested that parts of this domain are dispensable for downshock protection. These findings extend our understanding of the aquatic cycle and ecological persistence of *F. tularensis*, with further implications for mechanosensitive channel biology.

KEYWORDS *Francisella tularensis*, adaptation to water, mechanosensitive channel, osmotic stress

Francisella tularensis is a Gram-negative bacterium responsible for the disease tularemia in humans and a wide range of animal species. Two subspecies of *F. tularensis* are of clinical significance for humans, namely, subsp. *tularensis* and subsp. *holarctica*

Received 4 October 2017 Accepted 15 December 2017

Accepted manuscript posted online 12 December 2017

Citation Williamson DR, Dewan KK, Patel T, Wastella CM, Ning G, Kirimanjeswara GS. 2018. A single mechanosensitive channel protects *Francisella tularensis* subsp. *holarctica* from hypoosmotic shock and promotes survival in the aquatic environment. Appl Environ Microbiol 84:e02203-17. <https://doi.org/10.1128/AEM.02203-17>.

Editor Volker Müller, Goethe University Frankfurt am Main

Copyright © 2018 American Society for Microbiology. All Rights Reserved.

Address correspondence to Girish S. Kirimanjeswara, gsk125@psu.edu.

* Present address: Kalyan K. Dewan, Center for Vaccines and Immunology, University of Georgia, Athens, Georgia, USA.

(1). *F. tularensis* subsp. *tularensis* is considered more virulent and is primarily confined to Northern America. On the other hand, *F. tularensis* subsp. *holarctica* is broadly distributed throughout the Northern Hemisphere and has also been found in Australia (2). The manifestations of tularemia are varied depending upon the route of exposure. The ulceroglandular and glandular forms of tularemia are more frequent and are associated with exposure via arthropod bites or direct contact with infected animals, leading to localized lymphadenopathy with or without the formation of an ulcer at the inoculation site (1, 3, 4). Another common manifestation is oropharyngeal tularemia, where the ingestion of contaminated water leads to pharyngitis and swelling of the cervical lymph nodes (1). Rare presentations include oculoglandular tularemia, involving conjunctivitis resulting from inoculation of the eye, as well as typhoidal and pneumonic tularemia, which are both severe systemic diseases resulting from the inhalation of *F. tularensis* (pneumonic) or with no obvious route of exposure (typhoidal) (3).

Tularemia is considered a zoonotic disease that is rarely if ever transmitted by human-to-human contact (3). Hence, understanding how the bacterium persists and spreads in the environment is important. While long-term reservoirs and transmission cycles of *F. tularensis* are not well understood (5), the role of freshwater is of particular interest in the ecology of the broadly distributed *F. tularensis* subsp. *holarctica*, for which an aquatic cycle has been described (1). Many large outbreaks of tularemia are of the oropharyngeal form and are linked to the direct ingestion of water contaminated with *F. tularensis* subsp. *holarctica*. Outbreaks of tularemia from contaminated drinking water have been reported in at least 10 countries, totaling thousands of cases. Such outbreaks have been reported in Turkey (6–8), Sweden (9), Germany (10), Norway (11–13), Russia (14, 15), Bulgaria (16, 17), Kosovo (18, 19), the Czech Republic (20), Italy (21, 22), and the Republic of Georgia (23). Isolated cases of tularemia associated with infection from freshwater have also been described in France (24, 25) and the United States (26). In many of these cases, *F. tularensis* was detected by PCR (10–13, 20) or was cultured (8, 9, 15–17, 23, 26) from water from the affected area.

As the presence of viable *F. tularensis* subsp. *holarctica* in freshwater is directly responsible for many naturally occurring cases of oropharyngeal tularemia, it is important to understand how the bacterium adapts and survives in water. *F. tularensis* subsp. *holarctica* has been shown to survive in otherwise sterile freshwater for 7 to 40 days (27, 28). Persistence may be enhanced by the presence of amoebae or ciliates (29, 30), but the bacterium is not able to persist in freshwater indefinitely (27, 28) and is often only seasonally recovered from natural bodies of water (7, 31). This suggests that *F. tularensis* is introduced to bodies of water shortly before outbreaks, and indeed, almost all cases of water contamination are attributed to the carcasses or excreta of infected animals, including hares, rodents, voles, lemmings, muskrats, and beavers (6–8, 10–12, 16, 17, 19, 22, 26, 31–33). The shift from an animal to a freshwater niche involves an abrupt decrease in extracellular osmolarity, producing a hypoosmotic shock (or osmotic “downshock”).

Downshock results in a rapid influx of water into the cytoplasm, increasing tension on the membrane and potentially leading to lysis of the cell (34). To prevent this outcome, bacteria rely on mechanosensitive channels of small (MscS) and large (MscL) conductances, which open in response to the physical stretch of the membrane and jettison osmolytes (35). By doing so, mechanosensitive channels relieve pressure, restore isotonicity, and enable survival from hypoosmotic shock (36). This is the best-established function of mechanosensitive channels; however, the broader MscS-type protein family is structurally and functionally diverse (34, 37). Members of the family share highly conserved cores but display a broad array of N- and C-terminal modifications (34, 38, 39). The net result is that many bacteria possess multiple genes that code for MscS-family proteins (34, 37), but some of these have lost their role in protecting from abrupt osmotic downshock and gained other functions, for instance, for gating in response to cyclic nucleotide ligands (40).

In this study, we sought to identify the mechanosensitive channel(s) that protects

F. tularensis subsp. *holarctica* from hypoosmotic shock, enabling it to survive the transition from a host to freshwater. We show that a single MscS-family channel in *F. tularensis* (FtMscS) is required for surviving the transition from mammalian cells to freshwater.

RESULTS

***F. tularensis* LVS mechanosensitive channels closely resemble those found in clinical and environmental strains.** We first sought to compare putative mechanosensitive channels in various *F. tularensis* subsp. *holarctica* strains to determine whether the live vaccine strain (LVS) was an accurate representation of other members of the subspecies. We compared the LVS to a human clinical isolate (FSC200), an isolate from a beaver (OSU18), and an isolate from drinking water (R13-38). Candidate mechanosensitive channel genes were identified using the conserved domain architecture retrieval tool (41). Our search yielded no hits when *Escherichia coli* MscL was used as a template but yielded four hits for MscS in each genome (FTL_1753, FTL_0945, FTL_1588, and FTL_1209 in the LVS). Two genes (FTL_1753 and FTL_0945) were identical in all four strains of *F. tularensis* subsp. *holarctica* (see Fig. S1 and S2 in the supplemental material). When we performed our initial bioinformatics comparison, FTL_1588 was annotated as a pseudogene in RefSeq (8-12-2015, annotation with NCBI software revision 3.0). Nevertheless, our analysis of FTL_1588 revealed that it was identical between the LVS and FSC200 and displayed a small N-terminal deletion in OSU18 (see Fig. S3). A gap in the whole-genome sequencing (WGS) assembly of R13-38 precluded this strain from comparison. The final hit (FTL_1209) was annotated as a pseudogene due to frameshifts in all four strains. Taken together, these data show that the live vaccine strain codes for mechanosensitive channels that accurately represent those found in clinical and environmental *F. tularensis* subsp. *holarctica* strains.

A single mechanosensitive channel protects *F. tularensis* subsp. *holarctica* from hypoosmotic shock. We next sought to determine which of the predicted mechanosensitive channels conferred protection from hypoosmotic shock/downshock. Because FTL_1753 and FTL_0945 were found in all four strains of *F. tularensis* subspecies *holarctica*, markerless in-frame deletions of these two genes were generated in the live vaccine strain (see Fig. S4). A hypoosmotic shock of 300 mM had little impact on the viability of the wild-type (WT) or Δ FTL_0945 strains but killed >90% of Δ FTL_1753 cells, indicating this gene is required for bacterial survival following osmotic downshock (Fig. 1A). To determine the magnitude of osmotic shock required to kill Δ FTL_1753 cells in medium, we measured their survival after graded downshocks of 100, 200, or 300 mM. The downshock of 300 mM killed the vast majority of Δ FTL_1753 cells as before; a 200 mM downshock caused a moderate but significant loss of viability, and a 100 mM downshock did not result in any loss of viability (Fig. 1B). These data for the Δ FTL_1753 strain are similar to prior observations for *E. coli* strains lacking two mechanosensitive channel genes, *mscS* and *mscL* (36). *Trans*-complementation with an expression plasmid for FTL_1753 completely restored the ability of Δ FTL_1753 cells to survive all three graded downshocks (Fig. 1B). Finally, we tested whether the observed phenotype was relevant to surviving the transition from a mammalian host to freshwater by equilibrating bacteria in phosphate-buffered saline (PBS) and then diluting them in double-distilled water (ddH₂O) or filtered water obtained from a freshwater lake. While the Δ FTL_1753 strain was unable to survive in lake water and distilled water, the wild type, the Δ FTL_0945 strain, and the *trans*-complemented strain of Δ FTL_1753 were able to survive under both conditions (Fig. 1C). These data demonstrate that FTL_1753 encodes a functional mechanosensitive channel that is required by *F. tularensis* subsp. *holarctica* to survive hypoosmotic shock, including that encountered when the bacterium transitions from a mammalian host to freshwater. Here, we will refer to the product of FTL_1753 as FtMscS, consistent with the nomenclature used for MscS from other organisms (34, 42). In contrast, FTL_0945 appears to be not essential for osmotic downshock from a high-NaCl environment to a low-NaCl environment. However, our results do not rule out the possibilities that FTL_0945 may be involved in the adapta-

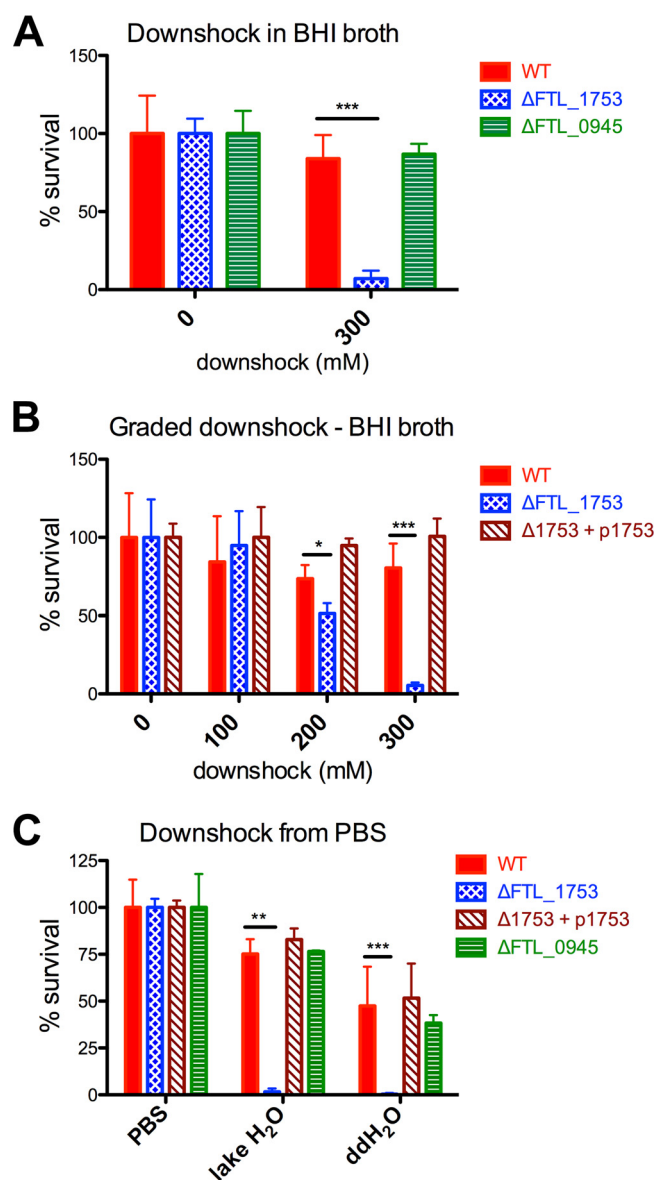


FIG 1 FTL_1753 is required for *F. tularensis* subsp. *holarctica* to survive hypoosmotic shock. (A and B) Survival data from downshock experiments performed in BHI broth. Bacteria were grown in BHI broth plus 300 mM NaCl, and then diluted in BHI broth plus 300, 200, 100, or 0 mM NaCl, producing hypoosmotic shocks of 0, 100, 200, and 300 mM, respectively. (C) Survival data for PBS-equilibrated bacteria diluted in water retrieved from a freshwater lake or double-distilled H₂O. Statistical differences were determined by one-way analyses of variance (ANOVAs) with Dunnett's posttests. *, $P < 0.05$; **, $P < 0.01$; ***, $P < 0.001$. Each experiment was performed a minimum of three times.

tion of the bacteria to other osmotic shifts nor that the functions of FTL_0945 may be compensated for by *FtMscS*. Nevertheless, our data clearly indicate that *FtMscS* is essential and sufficient for *F. tularensis* subsp. *holarctica* to survive osmotic downshock.

Δ FTL_1753 bacteria are not more sensitive to detergents, H₂O₂, or antibiotics.

To establish whether the deletion of FTL_1753 (*FtMscS*) or FTL_0945 resulted in a more generalized vulnerability to stressors, we tested these strains for sensitivity to three detergents and H₂O₂. The three detergents included an anionic detergent (SDS), a cationic detergent (cetyltrimethylammonium bromide [CTAB]), and a nonionic detergent (Triton X-100). In contrast to the large differences observed in the survival from downshock, all strains displayed similar sensitivity profiles to these stressors (Fig. 2). As mechanosensitive channels have been associated with antibiotic sensitivity in some

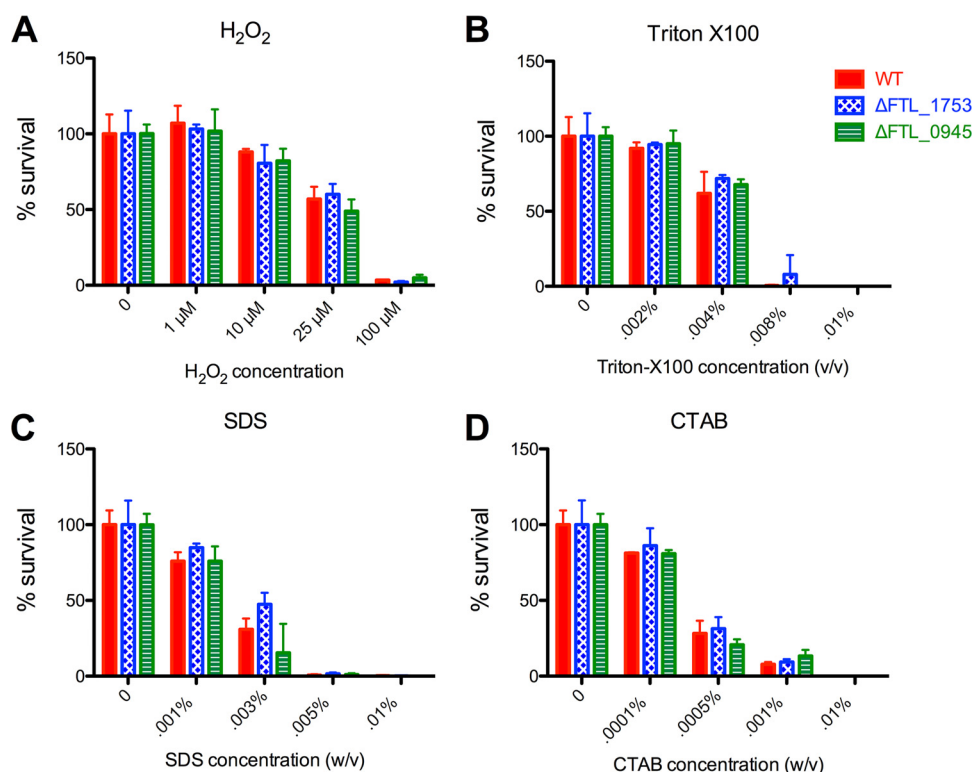


FIG 2 Sensitivity profiles of the wild-type, ΔFTL_{1753} , and ΔFTL_{0945} strains to detergents and H_2O_2 . Early-log-phase bacteria were exposed to the indicated concentrations of H_2O_2 (A), Triton X-100 (B), SDS (C), or CTAB (D) in medium for 1 h before dilution and plating to enumerate viable CFU. Representative results shown are from a minimum of four repeats. No statistically significant differences were found by one-way ANOVAs with Dunnett's posttests.

contexts (43–45), we determined the MICs of 9 antibiotics for these strains. The knockout strains displayed sensitivities identical to that of the wild type, with the exception of the ΔFTL_{1753} strain, which appeared slightly more resistant to kanamycin (see Table S1). These data support a specific role for *FtMscS* in survival from hypoosmotic shock rather than a more general role in the resistance to physical or chemical stressors.

***FtMscS* does not contribute to virulence in the host niche but is required to survive the transition from that niche to freshwater.** We next sought to determine the roles of *FtMscS* and *FTL_0945* in the context of the mammalian host niche. As *F. tularensis* is an intracellular pathogen that predominantly targets macrophages, we tested the ability of these strains to proliferate in macrophages using gentamicin protection assays. Similar amounts of intramacrophage growth were observed for all strains, suggesting that these genes do not contribute to *F. tularensis* replication within host cells (Fig. 3A). For the most part, mammalian tissues are maintained at similar osmolarities. However, some large osmotic gradients are found in mammals, most notably in the kidneys and liver. To determine whether *FTL_1753* and *FTL_0945* contribute to the pathogenesis of *F. tularensis* in the mammalian host, we tested strains lacking these genes in a mouse model of pneumonic tularemia. Mice infected with each of the strains displayed similar survival profiles, suggesting that these genes do not contribute to virulence within a host (Fig. 3B). Finally, we tested whether *FtMscS* is required for surviving the transition from a mammalian cell niche to freshwater using a modified gentamicin protection assay. After eliminating extracellular bacteria, infected macrophages were lysed either with detergent in PBS or with ddH₂O. Similar numbers of viable bacteria were recovered using the PBS-detergent lysis buffer. In contrast, *FtMscS* was required for bacteria to survive macrophage lysis with ddH₂O (Fig. 3C). Collectively, these

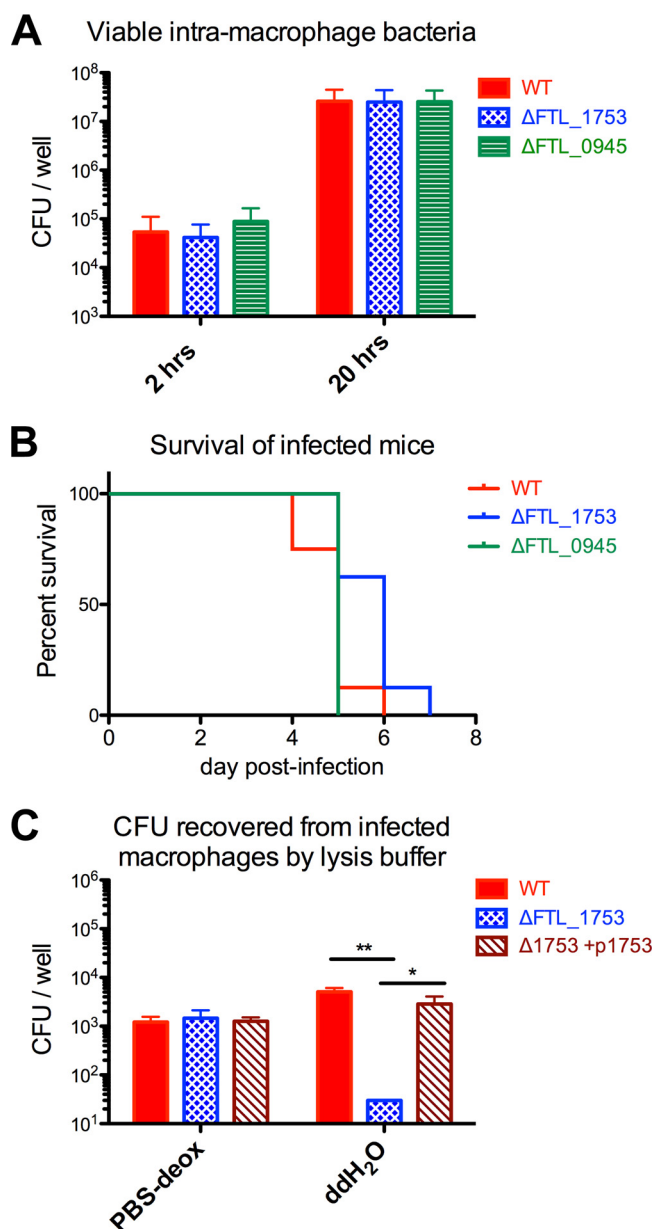


FIG 3 FTL_1753 (*FtMscS*) does not contribute to virulence in the host niche but is required to survive the transition from that niche to freshwater. (A) Viable CFU of indicated *F. tularensis* strains recovered from RAW 264.7 macrophages in a gentamicin protection assay at 2 and 20 h postinfection; pooled data from three repeats. (B) Survival curves of C57BL/6J mice ($n = 8$ per group) infected with 10^4 CFU of the indicated strains of *F. tularensis* LVS. (C) Viable CFU of indicated *F. tularensis* strains recovered from infected RAW 264.7 macrophages based on lysis buffer used. PBS-deox, 0.1% (wt/vol) sodium deoxycholate in PBS. One-way ANOVA with Tukey's posttest: *, $P < 0.05$; **, $P < 0.01$.

data suggest that *FtMscS* is not required for virulence within the mammalian host niche but is required to survive the transition from this niche to freshwater.

***FtMscS* lacks the C-terminal α - β domain and axial β -barrel found in prototypical *MscS* structures.** At 165 amino acids, *FtMscS* is notably smaller than the *MscS* protein found in *E. coli* (*EcMscS*; 286 amino acids [aa]) (46) and other species for which crystal structures have been determined (*Helicobacter pylori*, 274 aa; *Thermoanaerobacter tengcongensis*, 282 aa) (42, 47). The size difference suggested that *FtMscS* may lack structural components found in prototypical versions of the channel. The *MscS* crystal structures solved thus far are comprised of homoheptamers, with three transmembrane α -helices per subunit, and large hollow cytoplasmic "vestibules" (Fig. 4) (42, 46, 48). The

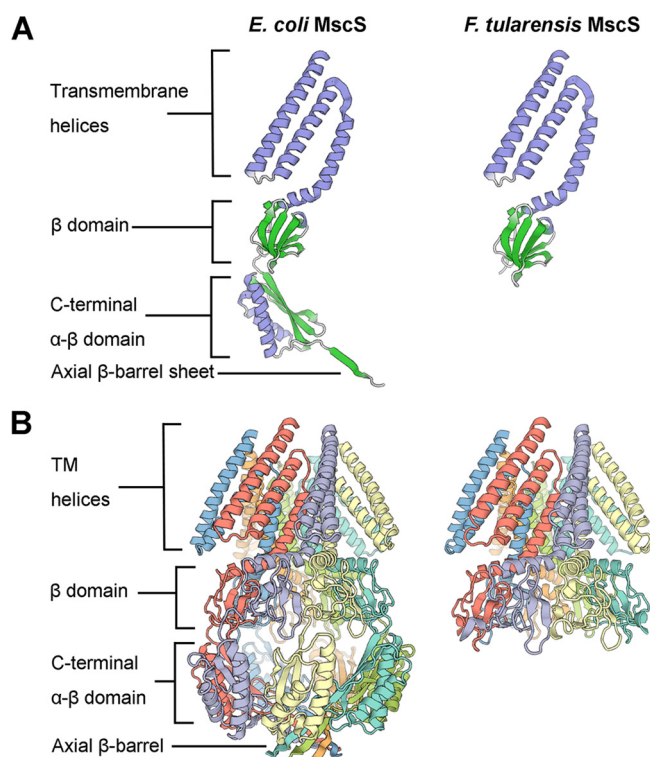


FIG 4 *FtMscS* lacks the C-terminal α - β domain and axial β -barrel found in prototypical MscS structures. (A) Structures of individual subunits of *E. coli* MscS (left) and *FtMscS* (right), colored according to secondary structure. (B) Structures of assembled homoheptamers of *E. coli* MscS (left) and *FtMscS* (right), colored by subunit. Images were generated using SWISS-MODEL (49) using PDB entry 2OAU as the structure template (63).

vestibule consists of a middle β domain, followed by a C-terminal α - β domain, and finally an axial β -barrel. We used SWISS-MODEL (49) to compare the predicted structure of *FtMscS* to the known structure of *EcMscS* (46). *FtMscS* closely resembles the N-terminal portion of *EcMscS*, with three transmembrane helices and a cytoplasmic β domain (Fig. 4A). However, the C-terminal α - β domain and the axial β -barrel are missing from the *FtMscS* structure (Fig. 4). These data suggest that *FtMscS* lacks the C-terminal part of the cytoplasmic vestibule found in the most heavily studied MscS channels.

Δ FTL_1753 cells are smaller in size on average than the wild type. As we observed that bacteria lacking *FtMscS* often formed smaller colonies than the wild type and a mutant form of *EcMscS* (lacking the C-terminal β -barrel) causes abnormal filamentation of *E. coli* cells (43), we used electron microscopy to determine whether cells lacking *FtMscS* displayed an aberrant morphology. Δ FTL_1753 cells were of a smaller average size than the wild type; two-dimensional (2D) outline traces revealed significantly smaller areas and perimeters than those of the wild type (Fig. 5A to F). Although smaller in size on average, Δ FTL_1753 cells had an overall morphology similar to that of the wild type, and there was no difference in the aspect ratio of fitted elliptical axes (Fig. 5G). These data show that the absence of FTL_1753 leads to smaller average bacterial cell sizes but does not lead to other gross morphological changes compared to the wild-type *F. tularensis* LVS.

Comparative bioinformatics reveal conservation of *FtMscS* but heterogeneity in the other mechanosensitive channels encoded by *F. tularensis* subspecies. We chose to focus our study on the *holarctica* subspecies of *F. tularensis*, as this is the subspecies for which an aquatic cycle has been described and that is responsible for outbreaks of tularemia from contaminated water. Nonetheless, as there is great interest in the highly virulent *F. tularensis* subsp. *tularensis* and also subsp. *novicida*, we

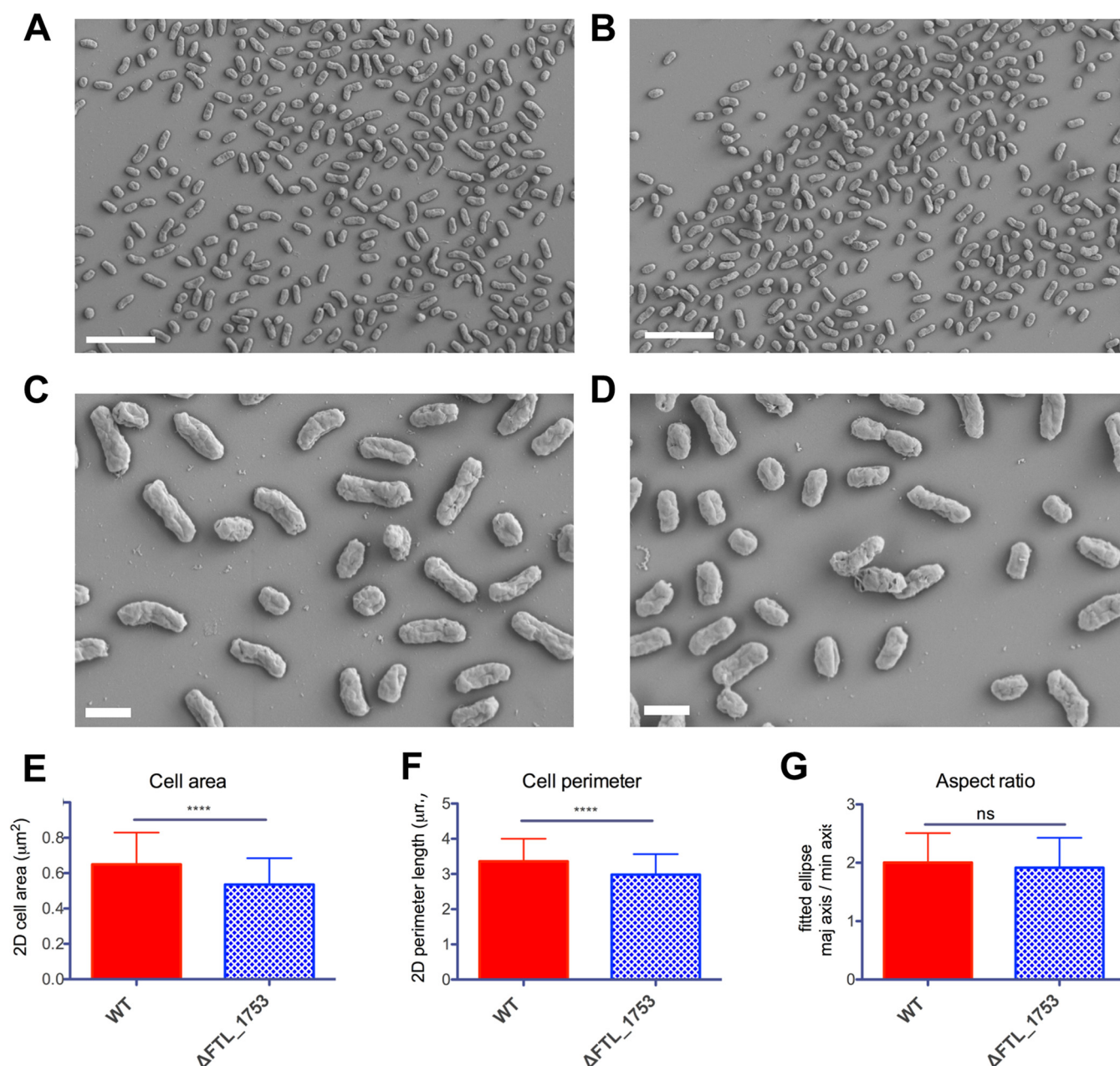


FIG 5 Δ FTL₁₇₅₃ cells are smaller in size on average than the wild type. SEM images of wild-type (A) and Δ FTL₁₇₅₃ (B) cells at $\times 3,000$ magnification. Scale bars, 5 μm . SEM images of wild-type (C) and Δ FTL₁₇₅₃ (D) cells at $\times 10,000$ magnification. Scale bars, 1 μm . Cells ($n > 180$ per group) were traced in ImageJ and subjected to the indicated analyses. (E) Two-dimensional areas of cell traces. (F) Perimeter lengths of cell traces. (G) Aspect ratios of ellipses fitted to cell traces. ****, $P < 0.0001$ by a two-tailed unpaired t test. Negative-staining experiments with uranyl acetate and phosphotungstic acid followed by transmission electron microscopy (TEM) yielded similar results.

compared the loci predicted to code for mechanosensitive channels in these subspecies to the loci present in *F. tularensis* subsp. *holarctica*. Of the four loci, the one corresponding to *FtMscS* (FTL₁₇₅₃) was the most highly conserved among the three subspecies, with only 1 to 2 amino acid substitutions between them (Fig. 6A; see also Fig. S5). The equivalent of FTL₁₇₅₃ in the prototypical *F. tularensis* subsp. *tularensis* (strain SCHU S4) genome is currently annotated as a pseudogene. However, our data and analyses suggest this is erroneous and should be corrected as explained in Discussion. The remaining three loci display marked heterogeneity among the *F. tularensis* subspecies. In the set of genes equivalent to FTL₀₉₄₅, the C-terminal 44% of the protein is lacking in both *F. tularensis* subsp. *holarctica* and *F. tularensis* subsp.

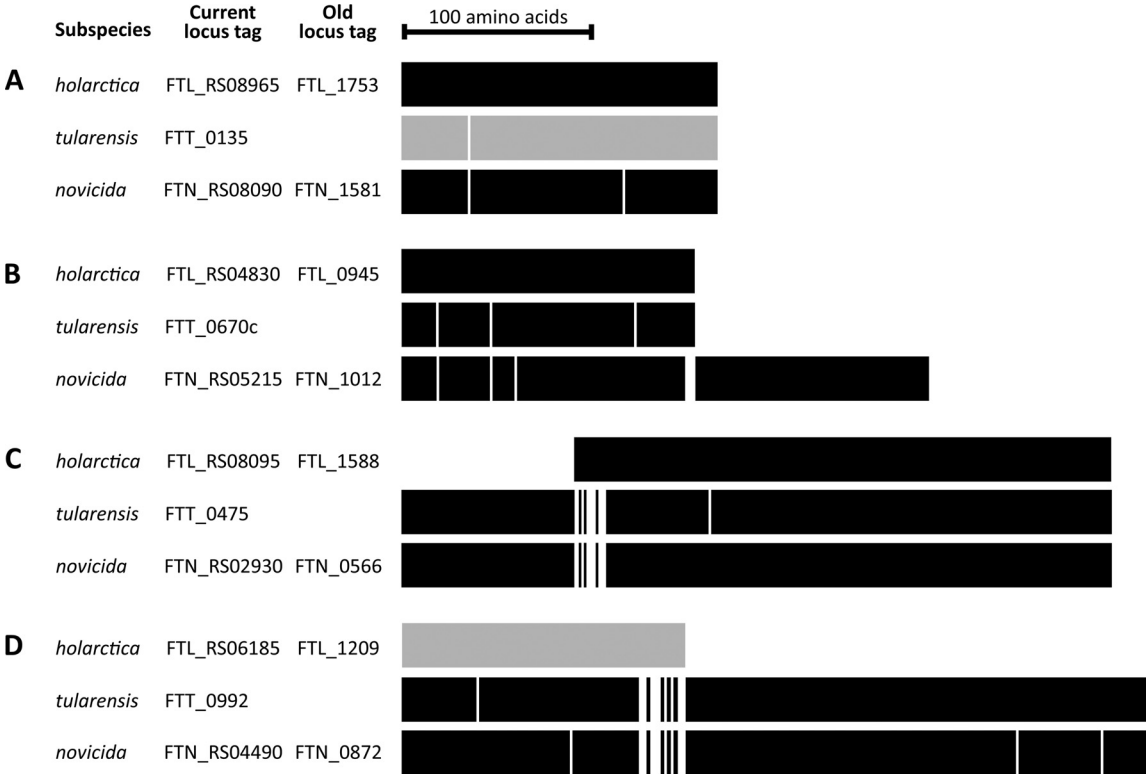


FIG 6 Summary of comparative alignments of loci predicted to encode mechanosensitive channels in *F. tularensis* subspecies. White lines represent amino acid substitutions relative to *F. tularensis* subsp. *holarctica* except where no *F. tularensis* subsp. *holarctica* sequence is aligned. Gray shading signifies a current pseudogene annotation in RefSeq. For alignment detail, see Fig. S5 to S8 in the supplemental material.

tularensis relative to *F. tularensis* subsp. *novicida* (Fig. 6B; see also Fig. S6). In another set, the N-terminal ~25% is absent in *F. tularensis* subsp. *holarctica* relative to the others (Fig. 6C; see also Fig. S7). In the final set, a frameshift has resulted in a premature stop codon and pseudogene annotation in *F. tularensis* subsp. *holarctica* (Fig. 6D; see also Fig. S8). Overall, these data suggest that (i) the mechanosensitive channel found to protect *F. tularensis* subsp. *holarctica* from hypoosmotic shock in this study is conserved among the *F. tularensis* subspecies and (ii) the other loci predicted to code for mechanosensitive channels exhibit considerable heterogeneity between the subspecies.

DISCUSSION

The contamination of freshwater by *F. tularensis* subsp. *holarctica* is relevant to the bacterium's ecological persistence and transmission to hosts, including humans. *F. tularensis* can persist in freshwater for only a limited time (27, 28) and is seasonally recovered from natural bodies of water, suggesting recurrent cycles of contamination (7, 31). To survive an osmotic downshock, such as that encountered when going from a mammalian host to freshwater, bacteria rely on mechanosensitive channels which act as "pressure relief valves." In this study, we have identified a mechanosensitive channel which protects *F. tularensis* subsp. *holarctica* from hypoosmotic shock (*FtMscS*, encoded by FTL_1753). The survival profile of the Δ FTL_1753 strain upon downshocks of 100 to 300 mM (Fig. 1B) closely resembles that of *E. coli* lacking both *mscL* and *mscS* (36) and is consistent with the notion that this is the only mechanosensitive channel that protects the subspecies from abrupt downshock. We demonstrated that the results of this study are applicable to clinical and environmental strains of *F. tularensis* subsp. *holarctica* (see Fig. S1 to S3 in the supplemental material) and that bacteria lacking FTL_1753 are unable to survive the transition from the osmolarity of the mammalian host to freshwater (Fig. 1C and 3C). Notably, FTL_1753 has been found to be upregu-

lated within the intracellular growth niche (50); speculatively, this may be to increase the chances of survival in the event of a shift to a freshwater niche.

The presence of *F. tularensis* subsp. *holarctica* in freshwater has led to outbreaks of mostly oropharyngeal tularemia in at least 10 countries, as described earlier. Oropharyngeal tularemia is often initially misdiagnosed, and without appropriate treatment, it can become a chronic debilitating disease with the risk of serious complications (23). In addition, the aquatic cycle of *F. tularensis* subsp. *holarctica* can be implicated in many cases of ulceroglandular tularemia; water is thought to facilitate the spread of bacteria between animals and to mosquito vectors. In cases where humans develop ulceroglandular tularemia from mosquito bites, mosquitos may acquire the bacterium from water during their development. In Sweden, where most cases of tularemia are associated with mosquito bites (3, 51), a strong association has been found between infection and recreational areas near water (52). Furthermore, mosquito larvae reared in pond water from areas where the bacterium is endemic or that were experimentally exposed to *F. tularensis* during development have been shown to harbor *F. tularensis* as adults (53, 54). In cases where humans develop ulceroglandular tularemia from handling infected animals, *F. tularensis* can often be found in water within the animals' habitat (26, 33, 55); the presence of viable bacteria in the water is thought to contribute to the spread and persistence of infection among animal populations (26, 33). Thus, the mechanosensitive channel identified here is likely to be important to the overall ecological persistence of *F. tularensis* and its transmission to humans and other susceptible hosts.

In a bioinformatics analysis, we identified four loci predicted to contain mechanosensitive channel domains in each *F. tularensis* genome surveyed, including in *F. tularensis* subsp. *tularensis* and *F. tularensis* subsp. *novicida* (Fig. 6; see also Fig. S1 to S3 and S5 to S8). Notably, *FtMscS* was the most conserved among the subspecies, with only one amino acid substitution between *F. tularensis* subsp. *holarctica* and *F. tularensis* subsp. *tularensis* (Fig. 6A; see also Fig. S5). A predictive structural analysis indicates that *FtMscS* lacks much of the cytoplasmic vestibule found in prototypical versions of MscS with crystal structures (Fig. 4). Specifically, it lacks the C-terminal α - β domain and axial β -barrel, which are required for stable membrane incorporation of *EcMscS* (56). This has led to a "partial" annotation in the nonredundant protein record for *FtMscS* (WP_003017262.1) and a pseudogene annotation in the manually curated *F. tularensis* subsp. *tularensis* strain SCHU S4 genome (FTT_0135). Our data demonstrate that this gene does indeed code for an active mechanosensitive channel that protects from downshock. Our findings support previous reports that parts of the cytoplasmic vestibule of MscS are dispensable for downshock protection. First, *EcMscS* with a targeted deletion of the axial β -barrel retained the ability to protect from downshock (56). Second, the expression of MscS from the archaeon *Nitrosopumilus maritimus*, similar in structure to *FtMscS*, partially protected *E. coli* lacking other mechanosensitive channels from osmotic downshock (57). Functions beyond survival from downshock have been reported for the cytoplasmic vestibule, including roles in ion selectivity (42, 58), channel inactivation (59), and as a sensor for cytoplasmic crowding (60). How these functions are affected by the absence of the α - β domain and axial β -barrel remain interesting open questions to be addressed by future studies. In conclusion, we have identified a 165-amino-acid mechanosensitive channel that protects *F. tularensis* subsp. *holarctica* from downshock. This channel is required for the bacterium to survive the transition from mammalian hosts to freshwater and likely contributes to the ecological persistence of *F. tularensis* and transmission between hosts.

MATERIALS AND METHODS

Bioinformatics analysis of mechanosensitive channel domain-containing genes in *F. tularensis*.

The amino acid sequences of mechanosensitive channels (MscS and MscL) that protect *E. coli* from downshock (36) were retrieved from UniProtKB and input into the conserved domain architecture retrieval tool (CDART) (41). Results were filtered to the *Francisella* genus using the NCBI taxonomy tree to identify genes containing MscS or MscL domains in the strains of interest. Open reading frame (ORF) and gene sequences were retrieved from RefSeq genomes, compared using standard protein BLAST and Needleman-Wunsch global alignment, and visualized using Multiple Align Show (http://www.bioinformatics.org/sms/multi_align.html).

TABLE 1 Primers and plasmids used in this study

Name	Sequence (5'→3') ^a	Description
1753_UP_F	TATTAAGCGGCCGCAATGTGTGAAATAACTTTTATACCACTTTTAGCAGAT	For upstream flank in FTL_1753 deletion construct
1753_UP_R	GAAGCGGAATTCACCTATTGCCTAATTGATCGAACATCGC	For upstream flank in FTL_1753 deletion construct
1753_DOWN_F	TCCCCGGAATTCCTAATGCAAAACGTTACTTCTTCAGATGAAATCC	For downstream flank in FTL_1753 deletion construct
1753_DOWN_R	AATCTTGTGCACTGCTCACGGAACCTCTCATTGAGTC	For downstream flank in FTL_1753 deletion construct
0945_UP_F	TATTAAGTCGACCTTTCAGGTAAGACATCAGCAG	For upstream flank in FTL_0945 deletion construct
0945_UP_R	TATTAAGGATCCAACGTTGATATTATGTTGAAAAGCATTTCATT	For upstream flank in FTL_0945 deletion construct
0945_DOWN_F	TATTAAGGATCCTAGGATGTATGAAACTATTGAGCATGG	For downstream flank in FTL_0945 deletion construct
0945_DOWN_R	ATTATCGGCGCGCTGGCATTATTGCTATTGATATATTCAGTG	For downstream flank in FTL_0945 deletion construct
0945_SCREEN_F	AGCAAATACCAACAACGATAACTGCT	For screening for FTL_0945 deletion
0945_SCREEN_R	TCITTTAATTAATTGCTCAAGCTTTTGGGCA	For screening for FTL_0945 deletion
pBFR_F	GCTCGTCTAGAGATCCATACCCATGATGGTTACTATTG	Bacterioferritin promoter for plasmid complementation
pBFR_R	GCCGCGGGATCCTATTGTTACCTCCATTATTTAAACTCTAATCA	Bacterioferritin promoter for plasmid complementation
1753_COMP_F	TCATCAGGATCCATGTTTCGATCAATTAGGCAATAGTGG	For FTL_1753 plasmid complementation
1753_COMP_R	GCTCCGAATTCACCTGATAATAAAAAATAACGCTCATCACT	For FTL_1753 plasmid complementation
MCS ₄ _1	CTAGAGAATTCGGATCCG	Phosphorylated oligonucleotide for generation of pKK214-MCS ₄ via annealed oligonucleotide cloning
MCS ₄ _2	AATTCGGATCCGAATTCT	Phosphorylated oligonucleotide for generation of pKK214-MCS ₄ via annealed oligonucleotide cloning
pMP812		<i>sacB</i> allelic exchange vector (61)
pKK214		Expression/complementation plasmid (29)

^aRestriction sites are underlined.

Bacterial strains and growth conditions. The *Francisella tularensis* subsp. *holarctica* live vaccine strain (LVS) was obtained from Albany Medical College and was grown on MH chocolate agar (Mueller-Hinton II agar [BD BBL] supplemented with 1% hemoglobin [Remel] and 1% Isovitalex [BD BBL]). Liquid cultures of *F. tularensis* were routinely grown in modified brain heart infusion (BHI) broth (299070; BD BBL) at pH 6.4 to 6.8. Cloning procedures were performed using DH5 α *E. coli* grown in LB broth (Miller formulation; BD Difico) or LB agar (Miller formulation; EMD Chemicals). Liquid cultures were incubated at 37°C in an orbital shaker operating at 200 rpm. Agar plates were incubated at 37°C under 5% CO₂ for 48 to 72 h.

Primers, plasmids, and DNA manipulation. All primers used in this study are shown in Table 1. The pMP812 *sacB* suicide vector (61) was used to generate targeted, markerless in-frame deletions of desired genes. Briefly, 700- to 900-bp PCR products flanking the sequence to be removed were amplified, digested, and ligated together and then reamplified as one unit and cloned into the multiple-cloning site (MCS) of pMP812. A complementation plasmid for FTL_1753 was generated by modifying the pKK214-GFP plasmid (29). First, the GroEL promoter and green fluorescent protein (GFP) gene were removed by digestion with XbaI and EcoRI. A multiple cloning site with four restriction sites was then added by annealed oligonucleotide cloning, with phosphorylated MCS₄_1 and MCS₄_2 oligonucleotides, to generate pKK214-MCS₄. The bacterioferritin promoter and FTL_1753 were amplified, digested, and ligated together and then reamplified as one unit and cloned into pKK214-MCS₄ with EcoRI. The resulting plasmid is referred to as p-1753. All oligonucleotides were synthesized by Integrated DNA Technologies or the Penn State Genomics Core Facility. All enzymes were from New England BioLabs. Vent DNA polymerase was used for cloning, and Taq DNA polymerase was used for screening. Genomic DNA was isolated from *F. tularensis* using an E.Z.N.A. bacterial DNA kit (Omega Bio-Tek) and plasmid DNA was isolated using an E.Z.N.A. plasmid DNA minikit I (Omega Bio-Tek).

Generation of in-frame deletions via allelic exchange and trans-complementation. Markerless in-frame deletions of FTL_1753 (new locus tag [FTL_RS08965](#)) and FTL_0945 (new locus tag [FTL_RS04830](#)) were generated using the pMP812 *sacB* suicide vectors as previously described (61). PCR was used to screen for secondary recombinants with deletions, as outlined in Fig. S4 in the supplemental material. Trans-complementation of FTL_1753 was achieved by introducing the p-1753 plasmid into a confirmed Δ FTL_1753 strain. Electrocompetent *F. tularensis* cells were prepared as previously described (62), except that electroporations were done using 0.1-cm gap cuvettes (VWR) and a Bio-Rad Micropulser using Ec1 settings (1.8 kV, 10 μ F, and 600 Ω).

Hypoosmotic shock assays. For downshock experiments conducted in medium, single colonies of each strain were picked from MH chocolate agar plates and grown in BHI broth supplemented with 300 mM NaCl (EMD Chemicals). Mid-log-phase cultures were diluted (in BHI broth plus 300 mM NaCl) to a concentration of approximately 5×10^5 CFU/ml, and then 20 μ l of each culture was added to 980 μ l of BHI broth plus 300, 200, 100, or 0 mM NaCl to produce hypoosmotic shocks of 0, 100, 200, or 300 mM, respectively. The resulting cultures were vortexed and incubated for 1 h at room temperature before plating on MH chocolate agar with the same concentrations of NaCl added to prevent further osmotic shock. The percent survival was calculated by comparing viable counts from cultures subject to downshock to cultures maintained with 300 mM NaCl throughout the experiment. For downshock experiments from PBS to freshwater, a similar method was used, except that no NaCl was added to growth medium, and cells were equilibrated in PBS for 30 min before dilution into freshwater for 10 min.

To test a source of water more naturally relevant than double-distilled H₂O, water was retrieved from a freshwater lake in Pennsylvania and passed through a 0.2- μ m filter.

H₂O₂ and detergent sensitivity assays. Single colonies of each strain were picked from MH chocolate agar plates and grown in BHI broth. Early-log-phase cultures were diluted to a concentration of approximately 4×10^4 CFU/ml and added 1:1 to plain medium or medium with $2 \times$ the final desired concentration of detergent or H₂O₂. All dilutions and challenges were performed in identical media, such that the only variable would be the detergent or H₂O₂. These cultures were vortexed and incubated for 1 h at room temperature before being diluted 1/10 in BHI broth, and 100 μ l was plated to enumerate viable CFU. The percent survival was calculated relative to the negative-control plates for the same strain (which yielded ~ 200 CFU).

Determination of antibiotic MICs. Twofold serial dilutions of each antibiotic were prepared and added to 96-well plates. Bacterial cultures were grown overnight, diluted to an optical density at 600 nm (OD₆₀₀) of 0.050, and added 1:1 to plate wells containing medium and antibiotics in triplicates. Plates were incubated overnight (~ 18 h), and bacterial growth was determined by measuring the optical density at 600 nm. The MIC was defined as the lowest final concentration of antibiotic for which cultures did not grow beyond an OD₆₀₀ of 0.1.

Intramacrophage replication and macrophage-to-freshwater downshock assays. RAW 264.7 macrophages were maintained in complete Dulbecco's modified Eagle medium (DMEM) (DMEM plus 10% fetal bovine serum [FBS], 1 mM sodium pyruvate, 2 mM L-glutamine, 10 mM HEPES, $1 \times$ nonessential amino acids). For intramacrophage replication assays, RAW 264.7 macrophages were seeded at a concentration of 3×10^5 cells per well in 24-well tissue culture plates (Greiner Bio-One) the evening before the assay. Macrophages were infected with early-log-phase BHI broth-grown *F. tularensis* cells at a multiplicity of infection of 100 bacteria per macrophage. Plates were centrifuged to facilitate synchronized infections (10 min, $300 \times g$, room temperature [RT]). After a 1-h incubation to allow for bacterial uptake, the medium was aspirated and replaced with medium containing 100 μ g/ml gentamicin (Gibco) to kill extracellular bacteria. Following an additional 1-h incubation, the cells were washed twice with PBS. For wells designated for later time points, fresh medium (without antibiotic) was added. Cells in other wells were lysed by the addition of 100 μ l/well of 0.1% (wt/vol) sodium deoxycholate (Sigma) in PBS. After lysis was observed, 900 μ l of PBS was added to each well, and serial dilutions were plated on MH chocolate agar to determine the number of bacteria that had been taken up by macrophages. At 20 h postinfection, cells were similarly lysed and plated to determine the number of bacteria present. Macrophage-to-freshwater downshock assays were conducted in a similar fashion but with the following alterations: 5×10^4 cells were seeded per well to minimize the contribution of intracellular salt carryover during lysis, and cells were lysed at the 2-h time point only using 200 μ l/well of either ddH₂O or PBS plus 0.1% (wt/vol) sodium deoxycholate.

Mouse infections. C57BL/6J mice were maintained under specific-pathogen-free conditions at the Pennsylvania State University animal care facilities. Isoflurane-anesthetized mice ($n = 8$ per group) were infected intranasally with 10,000 CFU of bacteria in 50 μ l of PBS. Serial dilutions of the inoculum were plated on MH chocolate agar to confirm the correct dose was administered. Body weights were measured daily, and mice that lost 20% or more of their starting body weights were euthanized and counted as having succumbed to infection, per the Institutional Animal Care and Use Committee (IACUC) guidelines. Experimental groups were age and sex matched.

Predictive structural modeling. The amino acid sequence of FTL_1753 was submitted to the SWISS-MODEL server (49), and a model was built using the structure of *E. coli* MscS as a template (PDB entry 2OAU [63]). The *E. coli* MscS protein sequence was similarly input to generate the corresponding images of *E. coli* MscS.

Electron microscopy. Five-milliliter bacterial cultures were grown to an OD₆₀₀ of approximately 0.5 and rinsed twice by centrifuging at $1,500 \times g$ for 4 min and then resuspending in prewarmed medium. Cells were fixed by resuspending in 2% glutaraldehyde (Electron Microscopy Sciences) in PBS for 30 min at room temperature and then overnight at 4°C. The cell suspension was applied to poly-L-lysine-coated coverslips for 10 min at 4°C and subjected to critical point drying in the chamber of a Leica EM CPD300 (Leica Microsystems, Buffalo Grove, IL) critical point dryer using an automatic program. The coverslips were then mounted onto double-sided carbon tape on a single-pin aluminum scanning electron microscopy (SEM) stub (Ted Pella, Redding, CA) and sputter coated with iridium on a rotation stage of a Leica ACE600 (Leica Microsystems, Buffalo Grove, IL). The bacterial samples were examined and imaged in a Zeiss Sigma FE-SEM instrument (Carl Zeiss Microscopy, Thornwood, NY) at 2 kV. Cell two-dimensional (2D) areas, perimeter lengths, and the aspect ratios of fitted ellipses were determined using ImageJ v1.50i (64).

Statistics. Statistical differences were determined as indicated in the figure legends using GraphPad Prism 5.0.

Ethics statement. All animal experiments were carried out by following recommendations and approval from the Pennsylvania State University Animal Care and Use Committee (protocol 46070) with great care taken to minimize the suffering of animals.

SUPPLEMENTAL MATERIAL

Supplemental material for this article may be found at <https://doi.org/10.1128/AEM.02203-17>.

SUPPLEMENTAL FILE 1, PDF file, 0.5 MB.

ACKNOWLEDGMENTS

We thank Martin Pavelka, University of Rochester, for providing the pMP812 plasmid and Karl Klose, University of Texas at San Antonio, for providing the pKK214-GFP plasmid. We also thank The Huck Institutes of the Life Sciences for the facilities and technical support.

This study was supported by a T32 training grant AI 074551 (NIAID/NIH) to D.R.W. and AI077917 (NIAID/NIH), AES4605 (USDA), and startup funds from Penn State University and The Huck Institutes of the Life Sciences to G.S.K.

The funders had no role in the study design, data collection and interpretation, or the decision to submit the work for publication.

REFERENCES

- Maurin M, Gyuranecz M. 2016. Tularemia: clinical aspects in Europe. *Lancet Infect Dis* 16:113–124. [https://doi.org/10.1016/S1473-3099\(15\)00355-2](https://doi.org/10.1016/S1473-3099(15)00355-2).
- Jackson J, McGregor A, Cooley L, Ng J, Brown M, Ong CW, Darcy C, Sintchenko V. 2012. *Francisella tularensis* subspecies *holarctica*, Tasmania, Australia, 2011. *Emerg Infect Dis* 18:1484–1486. <https://doi.org/10.3201/eid1809.111856>.
- Sjöstedt A. 2007. Tularemia: history, epidemiology, pathogen physiology, and clinical manifestations. *Ann N Y Acad Sci* 1105:1–29. <https://doi.org/10.1196/annals.1409.009>.
- Jones CL, Napier BA, Sampson TR, Llewellyn AC, Schroeder MR, Weiss DS. 2012. Subversion of host recognition and defense systems by *Francisella* spp. *Microbiol Mol Biol Rev* 76:383–404. <https://doi.org/10.1128/MMBR.05027-11>.
- Tärnvik A, Priebe H-S, Grunow R. 2004. Tularemia in Europe: an epidemiological overview. *Scand J Infect Dis* 36:350–355. <https://doi.org/10.1080/00365540410020442>.
- Aktas D, Celebi B, Isik ME, Tutus C, Ozturk H, Temel F, Kizilaslan M, Zhu B-P. 2015. Oropharyngeal tularemia outbreak associated with drinking contaminated tap water, Turkey, July–September 2013. *Emerg Infect Dis* 21:2194–2196. <https://doi.org/10.3201/eid2112.142032>.
- Kilic S, Birdsell DN, Karagöz A, Çelebi B, Bakkaloglu Z, Arkan M, Sahl JW, Mitchell C, Rivera A, Maltinsky S, Keim P, Üstek D, Durmaz R, Wagner DM. 2015. Water as source of *Francisella tularensis* infection in humans, Turkey. *Emerg Infect Dis* 21:2213–2216. <https://doi.org/10.3201/eid2112.150634>.
- Karadenizli A, Forsman M, Şimşek H, Taner M, Öhrman C, Myrtenäs K, Lärkeryd A, Johansson A, Özdemir L, Sjödin A. 2015. Genomic analyses of *Francisella tularensis* strains confirm disease transmission from drinking water sources, Turkey, 2008, 2009 and 2012. *Euro Surveill* 20:21136. <https://doi.org/10.2807/1560-7917.ES2015.20.21.21136>.
- Alm E, Advani A, Bråve A, Wahab T. 2015. Draft genome sequence of strain R13-38 from a *Francisella tularensis* outbreak in Sweden. *Genome Announc* 3:e01517-14. <https://doi.org/10.1128/genomeA.01517-14>.
- Kaysser P, Seibold E, Mätz-Rensing K, Pfeffer M, Essbauer S, Splettstoesser WD. 2008. Re-emergence of tularemia in Germany: presence of *Francisella tularensis* in different rodent species in endemic areas. *BMC Infect Dis* 8:157. <https://doi.org/10.1186/1471-2334-8-157>.
- Larsen KW, Afset JE, Heier BT, Krogh T, Handeland K, Vikøren T, Bergh K. 2011. Outbreak of tularemia in central Norway, January to March 2011. *Euro Surveill* 16:19828. <https://doi.org/10.2807/ese.16.13.19828-en>.
- Brantsaeter AB, Krogh T, Radtke A, Nygard K. 2007. Tularemia outbreak in northern Norway. *Euro Surveill* 12:E070329.2.
- Berdal BP, Mehl R, Haaheim H, Løksa M, Grunow R, Burans J, Morgan C, Meyer H. 2000. Field detection of *Francisella tularensis*. *Scand J Infect Dis* 32:287–291. <https://doi.org/10.1080/00365540050165938>.
- Rogutskii SV, Khramtsov MM, Avchinikov AV, Gar'kavaia OI, Larchenkova NV, Golovanov AM, Parfenova TA, Rudkovskaia LB. 1997. An epidemiological investigation of a tularemia outbreak in Smolensk Province. *Zh Mikrobiol Epidemiol Immunobiol* 2:33–37. (In Russian.)
- Karpoff SP, Antonoff NI. 1936. The spread of tularemia through water, as a new factor in its epidemiology. *J Bacteriol* 32:243–258.
- Kantardjiev T, Ivanov I, Velinov T, Padeshki P, Popov B, Nenova R, Mincheff M. 2006. Tularemia outbreak, Bulgaria, 1997–2005. *Emerg Infect Dis* 12:678–680. <https://doi.org/10.3201/eid1204.050709>.
- Christova I, Velinov T, Kantardjiev T, Galev A. 2004. Tularemia outbreak in Bulgaria. *Scand J Infect Dis* 36:785–789. <https://doi.org/10.1080/00365540410021199>.
- Grunow R, Kalaveshi A, Kühn A, Mulliqi-Osmani G, Ramadani N. 2012. Surveillance of tularemia in Kosovo, 2001 to 2010. *Euro Surveill* 17:20217. <https://doi.org/10.2807/ese.17.28.20217-en>.
- Reintjes R, Dedushaj I, Gjini A, Jorgensen TR, Cotter B, Lieftucht A, D'Ancona F, Dennis DT, Kosoy MA, Mulliqi-Osmani G, Grunow R, Kalaveshi A, Gashi L, Humolli I. 2002. Tularemia outbreak investigation in Kosovo: case control and environmental studies. *Emerg Infect Dis* 8:69–73. <https://doi.org/10.3201/eid0801.010131>.
- Pazdiora P, Morávková I, Nocarová D, Velkoborská M, Valecková K. 2002. A water-borne epidemic of tularemia in Chlumcany. *Epidemiol Mikrobiol Immunol* 51:23–25. (In Czech.)
- Mignani E, Palmieri F, Fontana M, Marigo S. 1988. Italian epidemic of waterborne tularemia. *Lancet* ii:1423.
- Greco D, Allegrini G, Tizzi T, Ninu E, Lamanna A, Luzi S. 1987. A water-borne tularemia outbreak. *Eur J Epidemiol* 3:35–38. <https://doi.org/10.1007/BF00145070>.
- Chitadze N, Kuchuloria T, Clark DV, Tsertsvadze E, Chokheli M, Tsertsvadze N, Trapaidze N, Lane A, Bakanidze L, Tsanova S, Hepburn MJ, Imnadze P. 2009. Water-borne outbreak of oropharyngeal and glandular tularemia in Georgia: investigation and follow-up. *Infection* 37:514–521. <https://doi.org/10.1007/s15010-009-8193-5>.
- Guerpillon B, Boibieux A, Guenne C, Ploton C, Ferry T, Maurin M, Forestier E, Dauwalder O, Manipoud P, Ltaief-Boudrigua A, Gürkov R, Vandenesch F, Bouchiat C. 2016. Keep an ear out for *Francisella tularensis*: otomastoiditis cases after canyoneering. *Front Med (Lausanne)* 3:9. <https://doi.org/10.3389/fmed.2016.00009>.
- Ughetto E, Héry-Arnaud G, Cariou M-E, Pelloux I, Maurin M, Caillon J, Moreau P, Ygout J-F, Corvec S. 2015. An original case of *Francisella tularensis* subsp. *holarctica* bacteremia after a near-drowning accident. *Infect Dis* 47:588–590. <https://doi.org/10.3109/23744235.2015.1028099>.
- Jellison WL, Epler DC, Kuhns E, Kohls GM. 1950. Tularemia in man from a domestic rural water supply. *Public Health Rep* 65:1219–1226. <https://doi.org/10.1007/97814584777>.
- Forsman M, Henningson EW, Larsson E, Johansson T, Sandström G. 2000. *Francisella tularensis* does not manifest virulence in viable but non-culturable state. *FEMS Microbiol Ecol* 31:217–224. <https://doi.org/10.1111/j.1574-6941.2000.tb00686.x>.
- Berrada ZL, Telford SR, III. 2011. Survival of *Francisella tularensis* type A in brackish-water. *Arch Microbiol* 193:223–226. <https://doi.org/10.1007/s00203-010-0655-8>.
- Abd H, Johansson T, Golovliov I, Sandström G, Forsman M. 2003. Survival and growth of *Francisella tularensis* in *Acanthamoeba castellanii*. *Appl Environ Microbiol* 69:600–606. <https://doi.org/10.1128/AEM.69.1.600-606.2003>.
- Thelaus J, Andersson A, Mathisen P, Forslund A-L, Noppa L, Forsman M. 2009. Influence of nutrient status and grazing pressure on the fate of *Francisella tularensis* in lake water. *FEMS Microbiol Ecol* 67:69–80. <https://doi.org/10.1111/j.1574-6941.2008.00612.x>.
- Schulze C, Heuner K, Myrtenäs K, Karlsson E, Jacob D, Kutzer P, Große K, Forsman M, Grunow R. 2016. High and novel genetic diversity of *Francisella tularensis* in Germany and indication of environmental persistence. *Epidemiol Infect* 144:3025–3036. <https://doi.org/10.1017/S0950268816001175>.
- Ul'ianova NI, Bessonova MA, Panasik LN, Svimonishvili VN, Grishina LS.

1982. Results of prolonged study of flood plain-swamp endemic foci of tularemia, and its prophylaxis in the Leningrad Region. *Zh Mikrobiol Epidemiol Immunobiol* 2:104–107. (In Russian.)
33. Young LS, Bickness DS, Archer BG, Clinton JM, Leavens LJ, Feeley JC, Brachman PS. 1969. Tularemia epidemic: Vermont, 1968. Forty-seven cases linked to contact with muskrats. *N Engl J Med* 280:1253–1260.
 34. Wilson ME, Mksaev G, Haswell ES. 2013. MscS-like mechanosensitive channels in plants and microbes. *Biochemistry* 52:5708–5722. <https://doi.org/10.1021/bi400804z>.
 35. Kung C, Martinac B, Sukharev S. 2010. Mechanosensitive channels in microbes. *Annu Rev Microbiol* 64:313–329. <https://doi.org/10.1146/annurev.micro.112408.134106>.
 36. Levina N, Töttemeyer S, Stokes NR, Louis P, Jones MA, Booth IR. 1999. Protection of *Escherichia coli* cells against extreme turgor by activation of MscS and MscL mechanosensitive channels: identification of genes required for MscS activity. *EMBO J* 18:1730–1737. <https://doi.org/10.1093/emboj/18.7.1730>.
 37. Cox CD, Nakayama Y, Nomura T, Martinac B. 2015. The evolutionary ‘tinkering’ of MscS-like channels: generation of structural and functional diversity. *Pflügers Arch* 467:3–13. <https://doi.org/10.1007/s00424-014-1522-2>.
 38. Malcolm HR, Maurer JA. 2012. The mechanosensitive channel of small conductance (MscS) superfamily: not just mechanosensitive channels anymore. *ChemBiochem* 13:2037–2043. <https://doi.org/10.1002/cbic.201200410>.
 39. Booth IR, Miller S, Müller A, Lehtovirta-Morley L. 2015. The evolution of bacterial mechanosensitive channels. *Cell Calcium* 57:140–150. <https://doi.org/10.1016/j.ceca.2014.12.011>.
 40. Caldwell DB, Malcolm HR, Elmore DE, Maurer JA. 2010. Identification and experimental verification of a novel family of bacterial cyclic nucleotide-gated (bcNG) ion channels. *Biochim Biophys Acta* 1798:1750–1756. <https://doi.org/10.1016/j.bbame.2010.06.001>.
 41. Geer LY, Domrachev M, Lipman DJ, Bryant SH. 2002. CDART: protein homology by domain architecture. *Genome Res* 12:1619–1623. <https://doi.org/10.1101/gr.278202>.
 42. Zhang X, Wang J, Feng Y, Ge J, Li W, Sun W, Iscla I, Yu J, Blount P, Li Y, Yang M. 2012. Structure and molecular mechanism of an anion-selective mechanosensitive channel of small conductance. *Proc Natl Acad Sci U S A* 109:18180–18185. <https://doi.org/10.1073/pnas.1207977109>.
 43. Koprowski P, Grajkowski W, Balcerzak M, Filipiuk I, Fabczak H, Kubalski A. 2015. Cytoplasmic domain of MscS interacts with cell division protein FtsZ: a possible non-channel function of the mechanosensitive channel in *Escherichia coli*. *PLoS One* 10:e0127029. <https://doi.org/10.1371/journal.pone.0127029>.
 44. Iscla I, Wray R, Wei S, Posner B, Blount P. 2014. Streptomycin potency is dependent on MscL channel expression. *Nat Commun* 5:4891. <https://doi.org/10.1038/ncomms5891>.
 45. Jiafeng L, Fu X, Chang Z. 2015. Hypoionic shock treatment enables aminoglycosides antibiotics to eradicate bacterial persisters. *Sci Rep* 5:14247. <https://doi.org/10.1038/srep14247>.
 46. Bass RB, Strop P, Barclay M, Rees DC. 2002. Crystal structure of *Escherichia coli* MscS, a voltage-modulated and mechanosensitive channel. *Science* 298:1582–1587. <https://doi.org/10.1126/science.1077945>.
 47. Lai JY, Poon YS, Kaiser JT, Rees DC. 2013. Open and shut: crystal structures of the dodecylmaltoide solubilized mechanosensitive channel of small conductance from *Escherichia coli* and *Helicobacter pylori* at 4.4 Å and 4.1 Å resolutions. *Protein Sci* 22:502–509. <https://doi.org/10.1002/pro.2222>.
 48. Wang W, Black SS, Edwards MD, Miller S, Morrison EL, Bartlett W, Dong C, Naismith JH, Booth IR. 2008. The structure of an open form of an *E. coli* mechanosensitive channel at 3.45 Å resolution. *Science* 321:1179–1183. <https://doi.org/10.1126/science.1159262>.
 49. Biasini M, Bienert S, Waterhouse A, Arnold K, Studer G, Schmidt T, Kiefer F, Gallo Cassarino T, Bertoni M, Bordoli L, Schwede T. 2014. SWISS-MODEL: modelling protein tertiary and quaternary structure using evolutionary information. *Nucleic Acids Res* 42:W252–W258. <https://doi.org/10.1093/nar/gku340>.
 50. Bent ZW, Brazel DM, Tran-Gyamfi MB, Hamblin RY, VanderNoot VA, Branda SS. 2013. Use of a capture-based pathogen transcript enrichment strategy for RNA-seq analysis of the *Francisella tularensis* LVS transcriptome during infection of murine macrophages. *PLoS One* 8:e77834. <https://doi.org/10.1371/journal.pone.0077834>.
 51. Eliasson H, Lindbäck J, Nuorti P, Arneborn M, Giesecke J, Tegnell A. 2002. The 2000 tularemia outbreak: a case-control study of risk factors in disease-endemic and emergent areas, Sweden. *Emerg Infect Dis* 8:956–960. <https://doi.org/10.3201/eid0809.020051>.
 52. Svensson K, Bäck E, Eliasson H, Berglund L, Granberg M, Karlsson L, Larsson P, Forsman M, Johansson A. 2009. Landscape epidemiology of tularemia outbreaks in Sweden. *Emerg Infect Dis* 15:1937–1947. <https://doi.org/10.3201/eid1512.090487>.
 53. Lundström JO, Andersson A-C, Bäckman S, Schäfer ML, Forsman M, Thelaus J. 2011. Transstadial transmission of *Francisella tularensis* holarctica in mosquitoes, Sweden. *Emerg Infect Dis* 17:794–799. <https://doi.org/10.3201/eid1705.100426>.
 54. Bäckman S, Näslund J, Forsman M, Thelaus J. 2015. Transmission of tularemia from a water source by transstadial maintenance in a mosquito vector. *Sci Rep* 5:7793. <https://doi.org/10.1038/srep07793>.
 55. Anda P, Segura del Pozo J, Díaz García JM, Escudero R, García Peña FJ, López Velasco MC, Sellek RE, Jiménez Chillarón MR, Sánchez Serrano LP, Martínez Navarro JF. 2001. Waterborne outbreak of tularemia associated with crayfish fishing. *Emerg Infect Dis* 7(3 Suppl):575–582. <https://doi.org/10.3201/eid0707.017740>.
 56. Schumann U, Edwards MD, Li C, Booth IR. 2004. The conserved carboxy-terminus of the MscS mechanosensitive channel is not essential but increases stability and activity. *FEBS Lett* 572:233–237. <https://doi.org/10.1016/j.febslet.2004.07.045>.
 57. Widderich N, Czech L, Elling FJ, Könneke M, Stöveken N, Pittelkow M, Rieckle R, Dickschat JS, Heider J, Bremer E. 2016. Strangers in the archaeal world: osmoresponsive biosynthesis of ectoine and hydroxyectoine by the marine thaumarchaeon *Nitrosopumilus maritimus*. *Environ Microbiol* 18:1227–1248. <https://doi.org/10.1111/1462-2920.13156>.
 58. Cox CD, Nomura T, Ziegler CS, Campbell AK, Wann KT, Martinac B. 2013. Selectivity mechanism of the mechanosensitive channel MscS revealed by probing channel subconducting states. *Nat Commun* 4:2137. <https://doi.org/10.1038/ncomms3137>.
 59. Nomura T, Sokabe M, Yoshimura K. 2008. Interaction between the cytoplasmic and transmembrane domains of the mechanosensitive channel MscS. *Biophys J* 94:1638–1645. <https://doi.org/10.1529/biophysj.107.114785>.
 60. Rowe I, Anishkin A, Kamaraju K, Yoshimura K, Sukharev S. 2014. The cytoplasmic cage domain of the mechanosensitive channel MscS is a sensor of macromolecular crowding. *J Gen Physiol* 143:543–557. <https://doi.org/10.1085/jgp.201311114>.
 61. LoVullo ED, Molins-Schneekloth CR, Schweizer HP, Pavelka MS. 2009. Single-copy chromosomal integration systems for *Francisella tularensis*. *Microbiology* 155:1152–1163. <https://doi.org/10.1099/mic.0.022491-0>.
 62. LoVullo ED, Sherrill LA, Perez LL, Pavelka MS. 2006. Genetic tools for highly pathogenic *Francisella tularensis* subsp. *tularensis*. *Microbiology* 152:3425–3435. <https://doi.org/10.1099/mic.0.29121-0>.
 63. Steinbacher S, Bass R, Strop P, Rees DC. 2007. Structures of the prokaryotic mechanosensitive channels MscL and MscS, p 1–24. In Simon S, Benos D (ed), *Current topics in membranes*. Academic Press, Cambridge, MA.
 64. Schneider CA, Rasband WS, Eliceiri KW. 2012. NIH Image to ImageJ: 25 years of image analysis. *Nat Methods* 9:671–675. <https://doi.org/10.1038/nmeth.2089>.